



Gas



Liquid & Slurry



Solid & Powder



Steam & Water

SENTRY COBRA SS SAMPLER

Low Emission Samplers

MANUAL SAMPLING

Designed for longevity, the Sentry® Cobra SS liquid sampler boasts a variety of unique features that makes it simpler to install and easier to operate. Made of stainless steel or other exotic materials, the sampler meets the highest standards of quality and reliability. All of our Cobra SS units use the Cobra-designed sampling valve that allows throttling and control of sample flow. The Cobra needle design provides ample time for air and other gases to be expelled. Representative samples are assured by following step-by-step procedures printed on the system.

MODEL

Cobra SS

BENEFITS

The Cobra SS sampler includes a multi-turn handle that permits precise flow control, while a full bore flow path ensures that no pressure is lost while the sample is being taken. The standard units come with our special coaxial needle system; the risk of bent or broken needles is reduced dramatically. The Cobra sampling valve has been specifically designed for process sampling, and protects against contamination to ensure the safety of the operator while maintaining the integrity of every sample taken.

FEATURES

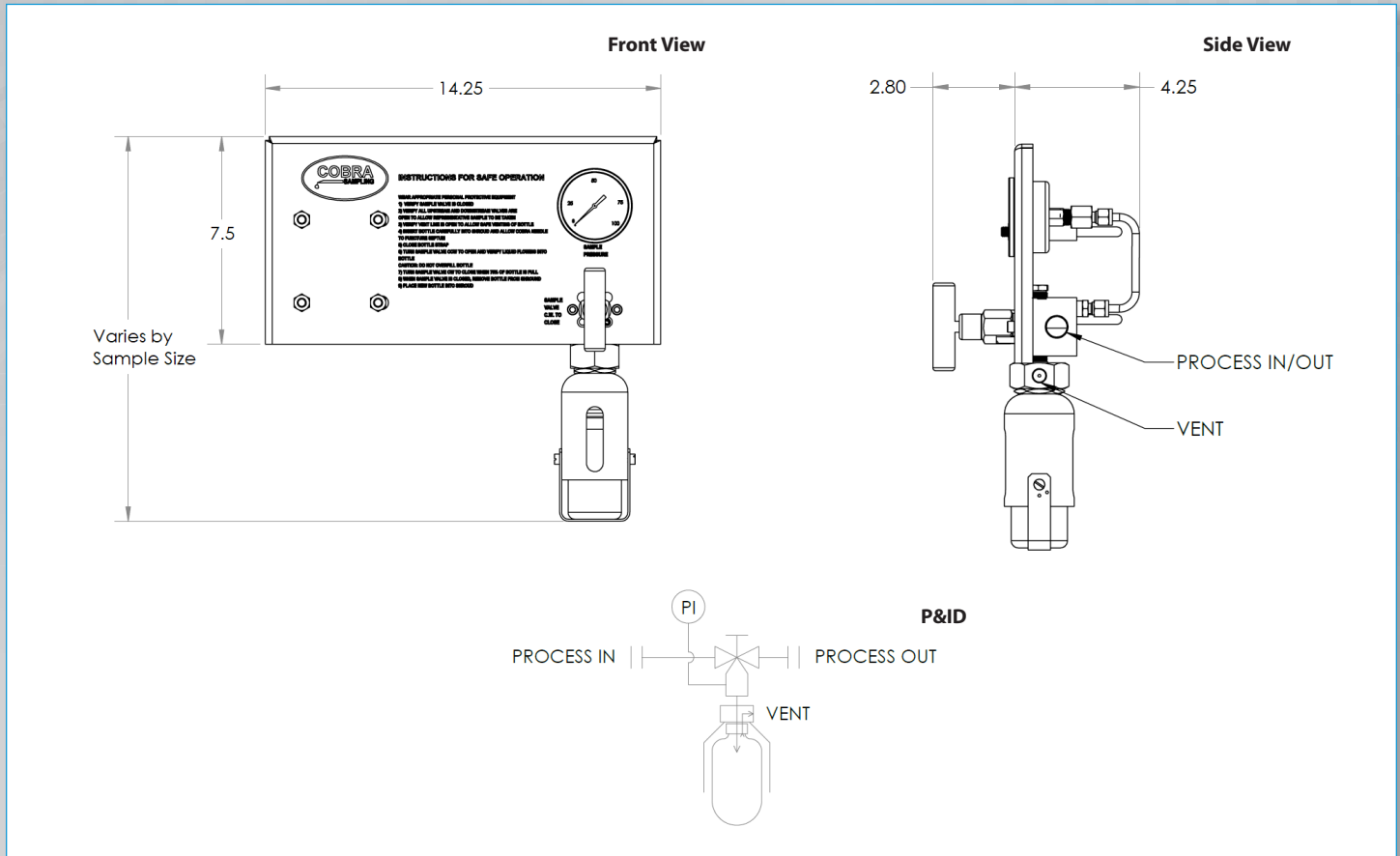
- Simplified version of Cobra M Sampler
- Designed for sampling low vapor pressure liquids (<18 psia) and low process pressure (<140 psi)
- Cobra flow-through valve allows constant representative process flow, allowing immediate sampling
- Provides a low-emission sample that is representative of the process
- Compliant with all EPA and LDAR requirements
- Cobra Needle
- Safe for operator and environment
- Step-by-step instruction tag and valves labeled for simple operation
- Side connections are labeled for ease of installation
- Optional N₂ needle purge
- Optional refillable captured vent canister



Sample. Monitor. Measure.

SENTRY

Any Application. Anywhere.



SPECIFICATIONS	
wetted materials	body: stainless steel (other materials available upon request) O-rings: Kalrez® (other materials available upon request)
bottle shroud	Delrin® or stainless steel
process pressure range	0-200 psi
process temperature	<140°F; cooler required for temps >140°F
sampler interface	1/2 in NPT (1/4 in NPT or compression fitting available upon request)
vent connection	1/4 in NPT (compression fitting available upon request)
bottle size	2 oz Boston round 4 oz Boston round 8 oz Boston round 16 oz Boston round 32 oz Boston round
options	pipe stand (2 in); dual pipe stand for mounting cooler; enclosure process isolation valves (inlet and/or return) secondary isolation valve needle purge return to vent (flare; emission filter)

sentry-equip.com

966 Blue Ribbon Circle North, Oconomowoc, WI 53066 U.S.A. | +1-262-567-7256 | sales@sentry-equip.com

© 2019 Sentry Equipment Corp. All rights reserved. Sentry is a registered trademark of Sentry Equipment Corp. All product and company names are property of their respective owners. It is solely the responsibility of end users, through their own testing and analysis, to select products and materials suitable for their specific application requirements, ensure they are properly installed, safely applied and properly maintained, and to limit their use to their intended purpose. Improper selection, installation or use may result in personal injury or property damage.

S-MS-SPS-00520-1 08-19



COMPANY WITH
QUALITY SYSTEM
CERTIFIED BY DNV GL
= ISO 9001 =